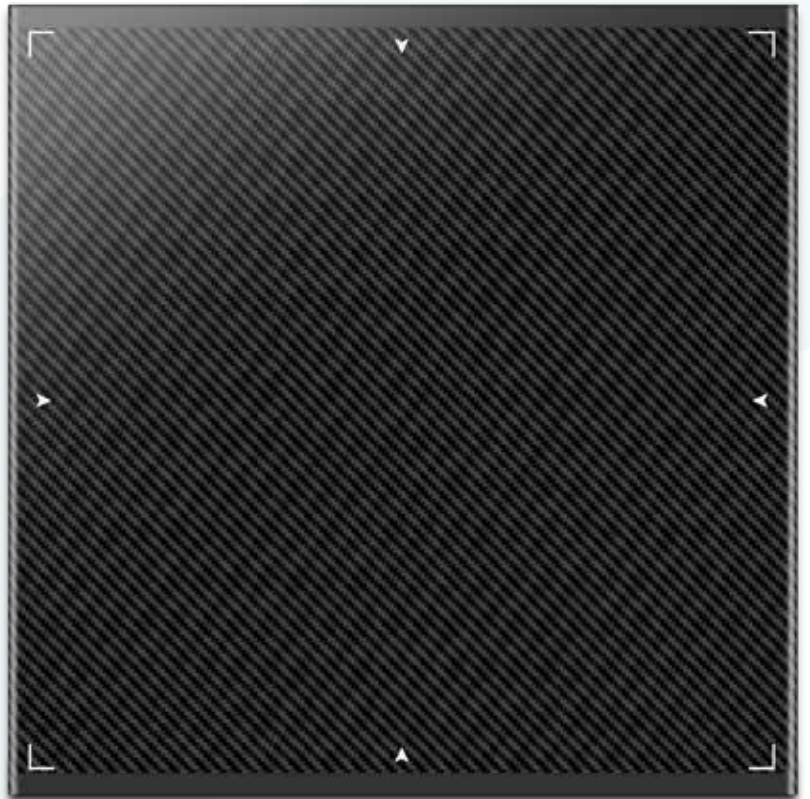




# *i<sup>Q</sup>Aspire*

REFINED & ROBUST DR



# Aspire to More Refined DR

## A New Era In Digital Radiography

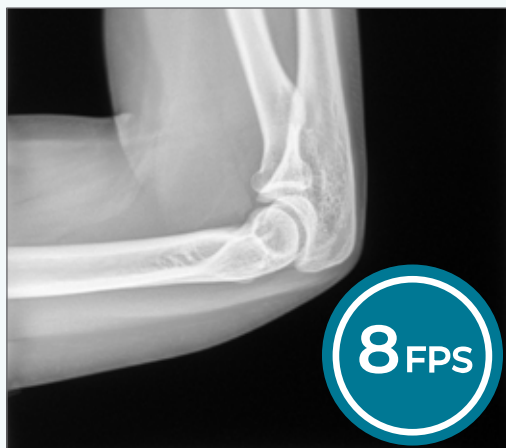
I<sup>Q</sup> Aspire DR panels represent a new era in digital radiography panel design and execution. Refined enough to provide motion capture\*, yet robust enough to support 400+ lbs, carbon fiber I<sup>Q</sup> Aspire DR panels deliver day in and day out in the toughest hospital, office, or remote care environments.

Whether you're investing in a new DR system, retrofitting an existing system or replacing your current panels, I<sup>Q</sup> Aspire panels give you persistent performance and superb imaging.

- Lighter than film cassettes
- Onboard image storage
- Full day battery life
- Optional handles
- Wi-Fi or Wired



## High Resolution Plus Motion Capture



Whichever scintillator you choose, all I<sup>Q</sup> Aspire panels offer high resolution/low noise images and up to 8 frames per second motion imaging\*, which is perfect for joint motion, barium swallows and other applications where simple movement needs to be visualized.

- Cesium Iodide (CsI)
- Gadolinium OxiSulfide (DRZ)

*\*Works-in-Progress*

# Aspire to More Robust DR

## Robust Construction For Great Reliability

Traditional DR panels are made with breakable glass. IQ Aspire DR panels are made with robust carbon fiber and no glass at all, so no drop insurance is required and expenses are reduced.

IQ Aspire DR panels are lighter in weight than traditional film cassettes yet have a weight capacity of 400+ pounds. IP67 compliant construction includes waterproofing to 1 meter so splashes and disinfectants are no problem.



## Make All The Right Connections

Connecting IQ Aspire DR panels to a network or workstation is a snap. In addition to gigabit wireless transmitting, data can also be transferred via a standard, consumer grade HDMI cable.



802.11ac Wireless



HDMI Data

## All Day Performance



IQ Aspire panels image all day on a single battery charge, with status in an OLED window, and can store up to 193 images on the panel.

## Get A Handle On It



With robust carbon fiber construction, certain IQ Aspire panels can be configured with carrying handles for added convenience and confidence.

# View Images On Your Mobile Device

Need to check on image capture when operating without a workstation? No problem. IQ Aspire DR panels enable your mobile device to wirelessly view captured images on a web viewer.

IQ Aspire panels are perfect for mobile X-ray applications or anytime you need to quickly review image capture.



## IQ Aspire Specifications

Basic Specifications	Networking Modes	Battery Life & Storage
<ul style="list-style-type: none"><li>• <b>Scintillator:</b><ul style="list-style-type: none"><li>• Cesium Iodide (CsI)</li><li>• Gadolinium OxiSulfide (DRZ)</li></ul></li><li>• Unbreakable TFT</li><li>• AED Auto Exposure Control</li><li>• ACC Auto Calibration Control</li><li>• Selectable Dynamic Range</li><li>• IP67 waterproof to 1 meter</li><li>• 400+ lb weight capacity</li></ul>	<ul style="list-style-type: none"><li>• <b>Wired</b><ul style="list-style-type: none"><li>• Gigabit Ethernet</li><li>• HDMI connector</li><li>• Transfer: 1.5~3 sec/image</li></ul></li><li>• <b>Wireless</b><ul style="list-style-type: none"><li>• IEEE 802.11ac VHT</li><li>• Gigabit Wi-Fi</li><li>• Transfer: 1.5~3 sec/image</li><li>• Auto-failing transfer control</li></ul></li></ul>	<ul style="list-style-type: none"><li>• <b>Double Layer Battery</b><ul style="list-style-type: none"><li>• 28 hours</li><li>• 5,000 shots</li><li>• 120 hours stand-by</li></ul></li><li>• <b>Single Layer Battery</b><ul style="list-style-type: none"><li>• 14 hours</li><li>• 2,500 shots</li><li>• 60 hours stand-by</li></ul></li><li>• Storage: Up to 200 images</li></ul>

## 1<sup>st</sup> Source – Your Imaging Resource Since 1999

Since our founding in 1999, 1<sup>st</sup> Source has made value, versatility and dependability our guiding principles. 1<sup>st</sup> Source offers a growing family of high-performance, next generation imaging solutions to meet the clinical challenges of today and tomorrow. Drawing on our extensive technology resources and experience, 1<sup>st</sup> Source is expanding the availability of Digital Radiographic imaging for all levels of medicine.